

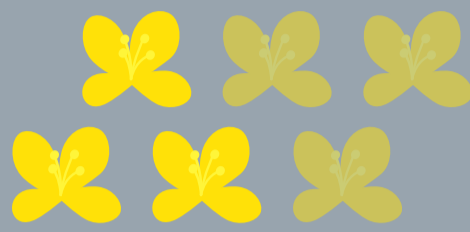
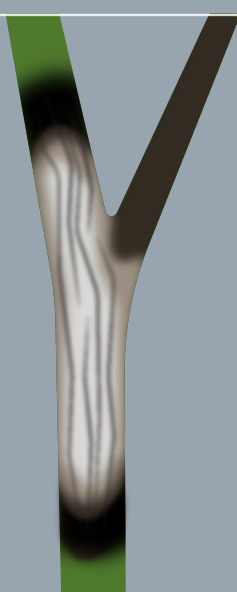
Protect from Sclerotinia stem rot and maximize canola yields

LEARN HOW TO INCREASE PROTECTION AND REDUCE YIELD LOSS UNDER SEVERE DISEASE PRESSURE

SCLEROTINIA STEM ROT IS THE MOST ECONOMICALLY SIGNIFICANT CANOLA DISEASE IN CANADA¹



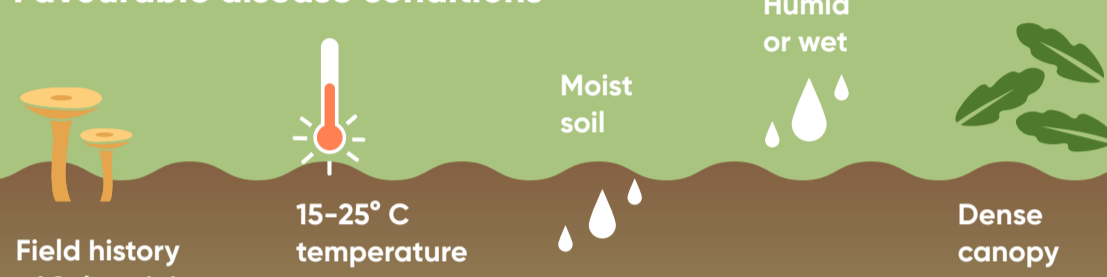
Observed in **4 in 5** crops in 2020 survey



Up to **50%** yield loss with favourable disease conditions

ONCE YOU SEE DISEASE SYMPTOMS IN YOUR CROP, IT IS TOO LATE TO SPRAY

Favourable disease conditions



Symptoms of Sclerotinia

- Lesions
- Bleached and weak stems
- Premature ripening
- Lodging

MANAGE SCLEROTINIA WITH A PROACTIVE ONE-TWO PUNCH

1. Grow a Pioneer Protector® Sclerotinia resistant canola hybrid



- Over **65%** reduction in Sclerotinia incidence
- Lessens disease transfer to the stem
- Reduces disease severity in infected stems

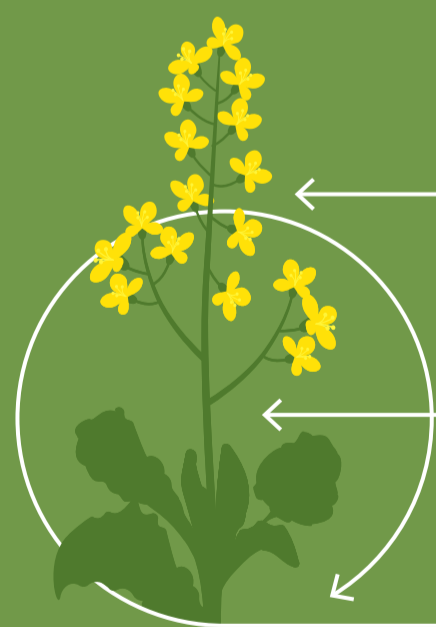
PIONEER

- 1st agriculture company to introduce Sclerotinia resistant canola hybrids in 2008
- Industry-leading canola protection trait built right into:



- High-yielding hybrids also offer the **best protection** from clubroot (including new sources of resistance), blackleg and verticillium wilt.

2. Make a proactive foliar fungicide application

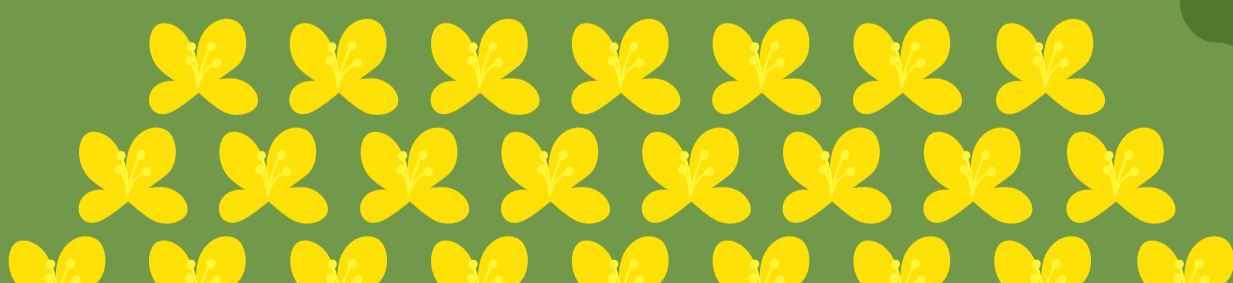


✓ Ideal application timing is **20-30%** bloom or before very few petals have fallen off the plants.

🌱 Acapela™ fungicide quickly and efficiently surrounds, penetrates and protects the leaf and stem.

🛡️ Rapidly absorbed for complete coverage and superior protection.

☀️ Delivers healthier crops and higher yield potential.



For more information on finding the right canola products with Sclerotinia resistance for you, contact your local Pioneer Sales Representative.

REFERENCES
1. Sclerotinia Incidence Map: Annual Saskatchewan Canola Disease Survey. <https://www.google.com/search?client=firefox-b-d&q=Sclerotinia+stem+rot+canola+western+canada>